

Five steps to a
totally personalised
hearing solution

Vivante Product Selection Guide 4.0

Welcome to the
Vivante™
experience



unitron™ Love the
experience

A Sonova brand

Five steps to the hearing solution that's right for you

Step one

Where do you experience hearing challenges?

Step two

Explore the technology levels

Step three

Pick a style that suits you

Step four

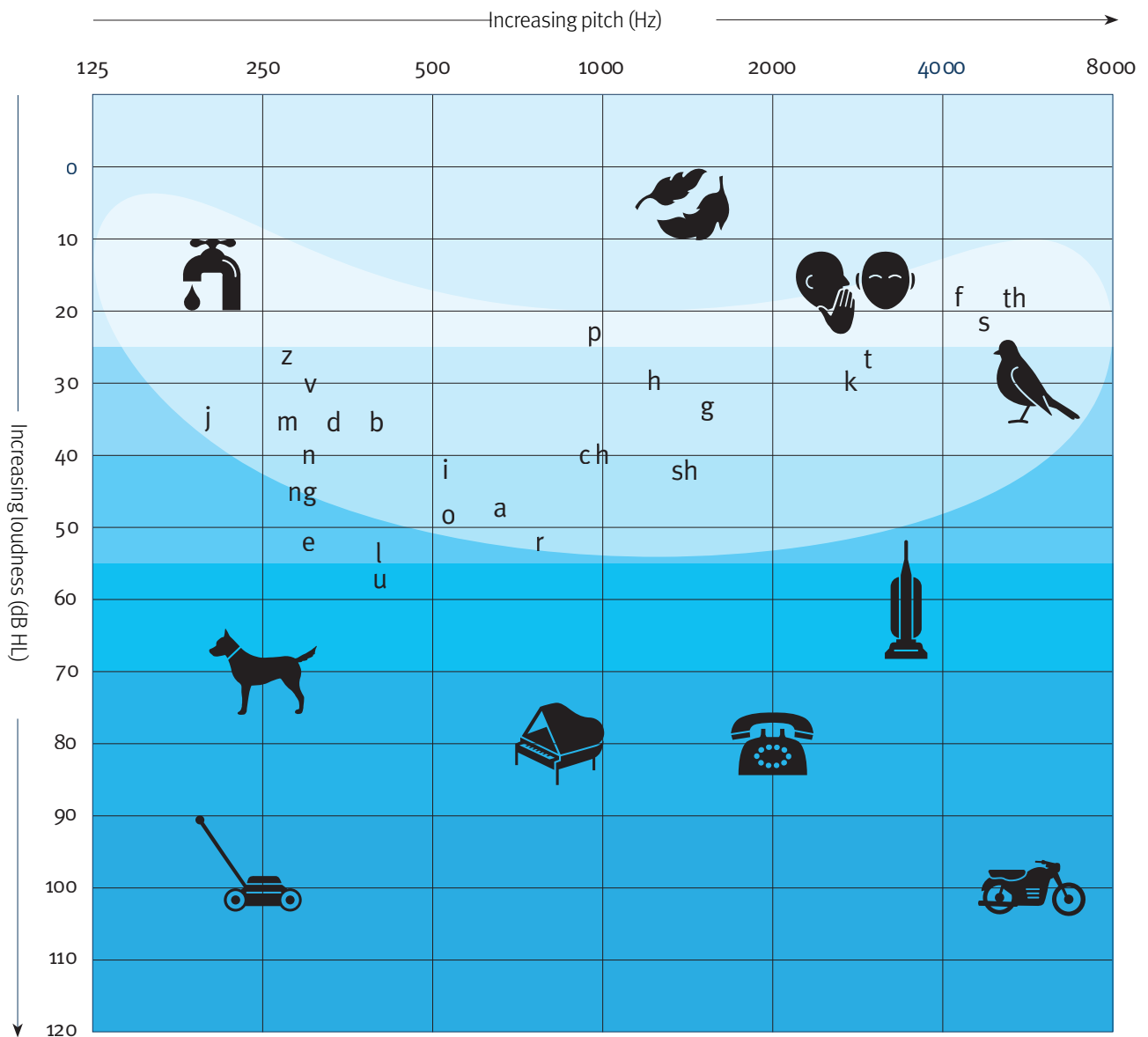
Colour your choice

Step five

Connect to convenience

Step one

Where do you experience hearing challenges?



Step two
























Explore the technology levels

Now we'll select the technology level that best matches your listening lifestyle.

	What's included	What you're missing
Level 9 ★★★★★	Premium performance in 8 environments and our most sophisticated features that automatically let you focus on speech and know where it's coming from in crowds and loud background noise (where you spend ____% of your time). Enjoy the ability to hear in quiet as well as delightful music automatically. Plus engage in conversations in the car with a special program that pinpoints and amplifies speech from any direction no matter where you are sitting.	Nothing. You've got everything available to suit your unique lifestyle.
Level 7 ★★★★	Advanced performance in 6 environments with the ability to help you focus on speech coming from the front and sides in challenging situations, and hear in quiet situations, plus an automatic music program and a manual car program that can be pre-set to focus on speech from one location.	The most sophisticated features to focus on speech from different directions in noisy conversations in loud noise and the car.
Level 5 ★★★	Standard performance in 4 environments that includes features to help you in multiple quiet and noisy environments.	Automatic optimisation for conversation in small groups and automatic engagement of a music program.
Level 3 ★★	The essentials in 2 environments. Limited ability to adjust automatically to accommodate more challenging listening situations. The flexibility to customise your experience with the fully featured Remote Plus app and control your streamed audio, calls and virtual assistants with tap control.	Automatic adjustment for comfort in quiet and noisy situations without speech.
Level 1[^] ★	Basic performance with the option to switch between manual programs for different situations. Basic functionality with the Remote Plus app.	Literally everything else.

[^]Only Moxi V-R and Moxi V-312 are available at Level 1 - lower essential technology level.

Improve quiet and challenging conversations with our latest advanced technology.

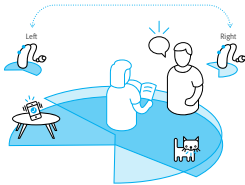
Automatic program	Manual programs
<p>8 environments</p> <div>  <p>Conversation in quiet</p> </div> <div>  <p>Conversation in noise</p> </div> <div>  <p>Quiet</p> </div> <div>  <p>Noise</p> </div> <div>  <p>Conversation in a small group</p> </div> <div>  <p>Music</p> </div> <div>  <p>Conversation in a crowd</p> </div> <div>  <p>Conversation in loud noise</p> </div>	<div>  <p>Conversation in loud noise</p> </div> <div>  <p>360 conversation in car</p> </div> <p>Various manual programs can be set.</p>
<p>6 environments</p> <div>  <p>Conversation in quiet</p> </div> <div>  <p>Conversation in noise</p> </div> <div>  <p>Quiet</p> </div> <div>  <p>Noise</p> </div> <div>  <p>Conversation in a small group</p> </div> <div>  <p>Music</p> </div>	<div>  <p>Conversation in loud noise</p> </div> <p>Car with speech</p> <p>Various manual programs can be set.</p>
<p>4 environments</p> <div>  <p>Conversation in quiet</p> </div> <div>  <p>Conversation in noise</p> </div> <div>  <p>Quiet</p> </div> <div>  <p>Noise</p> </div>	<p>Various manual programs can be set.</p>
<p>2 environments</p> <div>  <p>Conversation in quiet</p> </div> <div>  <p>Conversation in noise</p> </div>	<p>Various manual programs can be set.</p>
<p>AutoMic</p>	<p>Various manual programs can be set. Optional app programs are not available.</p>

Sound performance
by technology level

Low complexity

Level 9

Premium
★★★★★

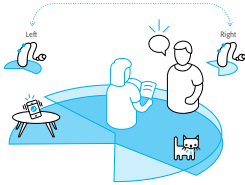


Pinna Effect 2

Binaural microphone mode that is designed to compensate for cues typically lost with hearing aids, which are needed for localisation.

Level 7

Advanced
★★★★

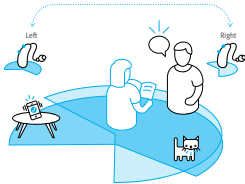


Pinna Effect 2

Binaural microphone mode that is designed to compensate for cues typically lost with hearing aids, which are needed for localisation.

Level 5

Standard
★★★



Pinna Effect 2

Binaural microphone mode that is designed to compensate for cues typically lost with hearing aids, which are needed for localisation.

Level 3

Essential
★★

Pinna Effect

Minimises the impact of acoustic cues typically lost with hearing aids.

Level 1^

Lower essential
★

Omni

Generalised microphone mode without features to offset acoustic cues typically lost with hearing instruments.

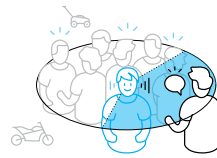
^Only Moxi V-R and Moxi V-312 are available at Level 1 - lower essential technology level.

High complexity



Speech from front

AutoFocus 360 identifies and focuses on speech from the front to provide a greater increase of speech than other technology levels. Dynamic noise reduction is active and adjustable to further reduce surrounding noise. For face-to-face conversations, in loud noise, and when the wearer is stationary, HyperFocus engages within the conversation in loud noise environment.

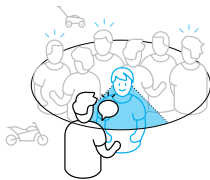


Speech from side



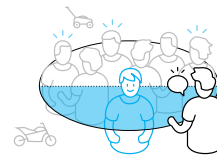
Speech from back

AutoFocus 360 can identify and focus on speech from any direction while reducing interfering noise.



Speech from front

AutoFocus identifies, focuses on and increases speech from the front. Dynamic noise reduction is active and adjustable to further reduce surrounding noise.



Speech from side and back

AutoFocus applies a wide front beam to capture speech partially from the sides.



All high complexity situations

Applies a wide front beam capturing the speech from the front.



All high complexity situations

Applies a wide front beam capturing speech from the front.

Higher complexity situations

AutoMic engages a wide front beam for speech from the front, however listening environments are not applied for automatic optimisation.

Step three

Pick a style that suits you

Choose from products available on the **Vivante™** platform.

Moxi (Receiver-in-canal)



Moxi™ V-312

Our smallest hearing aid with a standard battery and direct connectivity

☐ Receiver-in-canal (RIC)



Moxi V-R

Our smallest rechargeable with direct connectivity

☐ Receiver-in-canal (RIC)



Moxi V-RT

Our rechargeable with direct connectivity and telecoil

☐ Receiver-in-canal (RIC)



Moxi V-RS

Our thinnest rechargeable hearing instrument with direct connectivity

☐ Receiver-in-canal (RIC)

Stride (Behind-the-ear)



Stride™ M

Our smallest BTE with direct connectivity, telecoil, and standard 312 battery

☐ Behind-the-ear (BTE)



Stride V-PR

Our rechargeable BTE with direct connectivity

☐ Behind-the-ear (BTE)



Stride V-SP

Our Super Power BTE with direct connectivity, telecoil, and standard 13 battery

☐ Behind-the-ear (BTE)



Stride V-UP

Our Ultra Power BTE with direct connectivity, telecoil, and standard 675 battery

☐ Behind-the-ear (BTE)

Hearing aids shown at actual size.

Vivante hearing aids are designed to focus on comfort, aesthetics and ease-of-use. Conveniently stream phone calls and other media, like music, podcasts and digital assistants right to your hearing aids, easily controlling them with just a tap.*

Chargers for the **Vivante** platform

Charging case for Moxi V-R and Moxi V-RT rechargeable hearing aids



Charging case for Moxi V-RS rechargeable hearing aids



Charging cases for Stride rechargeable hearing aids



Products on the **Blu** platform

Other styles that could suit your hearing needs are available on the Blu platform**



Insera™ B-312

Our wireless ITE model with direct connectivity

☐ In-the-ear (ITE)



Insera B-312 NW O

Our non-wireless omni ITE model with a telecoil

☐ In-the-ear (ITE)



Insera B-10 NW O

Our smallest non-wireless omni ITE model with a telecoil

☐ In-the-ear (ITE)

Hearing aids shown at actual size. Charging cases not shown at actual size.

*Tap control is available for rechargeable models only.

** Hearing aids on the Blu platform differ from the Vivante platform. Speak with your hearing care professional for more information.

Step four

Colour your choice



Sand
(R8)



Amber
(P2)*



Espresso
(P4)*



Platinum
(P6)



Pewter
(P7)*



Charcoal
(P8)



Beige
(26)



Tan
(14)



Cocoa
(22)



Brown
(28)



Black
(06)**

Colours shown on the Moxi V-R style are also available on all Moxi V-RT, Moxi V-312 and Stride styles.
Moxi V-R shown at actual size.

*Colours not available on Moxi V-RS.

**Available for Inera B-312 and Inera B-10 IIC styles only.

Step five

Connect to convenience



TV Connector

Stream your favourite media wirelessly in stereo sound with the TV Connector.



PartnerMic

PartnerMic is an easy-to-use lapel microphone ideal for one-on-one conversations.



Remote Control

Discreetly adjust volume and switch programs with the Remote Control.

Remote Plus app

The Remote Plus app puts easy personalisation at your fingertips.



Scan to download the Remote Plus app.



App Store



Google Play

Need more help in challenging listening situations like meetings or conversations in noise or over distance?

Let's discuss if a Roger™ device could be a good fit for you.

Accessories shown at actual size.

Accessories shown are available with all Vivante products and wireless products on the Blu platform.

App Store is a service mark of Apple Inc.

Google Play is a trademark of Google Inc.

What's next?

- ☐ Discuss your needs
- ☐ Try at home
- ☐ Come in for a follow-up assessment
- ☐ Personalise your solution
- ☐ Come in for your final fitting on:

Recommendation:			
Technology level:	Style:	Warranty:	Cost:
Accessories:			

Notes:



Unitron makes life vibrant with amazing hearing solutions designed to make the experience easy. Because everyone deserves to **Love the experience.**

© 2024 Sonova AG, or its affiliates.
028-6722-48/V4.00/2024-09/jb

unitron.com/au
1800 212 313

