

## Insera B9-312, Insera B7-312, Insera B5-312, Insera B3-312 In-the-ear (ITE) direct connectivity hearing instrument series



Insera B-312

Integra OS		Blu 9 Premium	Blu 7 Advanced	Blu 5 Standard	Blu 3 Essential
Environmental classification	Total listening environments	7	6	4	2
	Noise	•			
	Conversation in noise	•	•		
	Music	•	•		
	Quiet	•	•	•	
	Conversation in a small group	•	•	•	
	Conversation in a crowd	•	•	•	•
	Conversation in quiet	•	•	•	•
	Total streaming environments	2	2	2	2
	Media speech	•	•	•	•
	Media music	•	•	•	•
Sound optimization and performance	AutoFocus 360	•			
	AutoFocus		•		
	Dynamic noise reduction	•	•		
	Soft speech lift	•	•	•	
	Spatial Awareness	•	•	•	
	Pinna Effect	•	•	•	•
	Speech enhancement	•	•	•	•
	Noise reduction	•	•	•	•
Hardware features					
	Made for all direct connectivity	•	•	•	•
Fine-tuning channels		20	20	16	12

### Available in all technology levels

#### Sound stabilization

- › AntiShock 2
- › Wind control
- › Feedback manager
- › Natural Sound Balance

#### Ease and convenience

- › Remote Plus app
- › TV Connector
- › Remote Control
- › PartnerMic
- › RogerDirect
- › DuoLink
- › Binaural Phone

#### Microphone options

- › Adaptive directional
- › Fixed directional
- › Fixed wide directional
- › Omni directional

#### Fitting

- › First fit workflow
- › Automatic Adaptation Manager
- › Frequency compression 2
- › Tinnitus masker
- › Manual programs
- › IntelliVent

#### Experience Innovations

##### Performance Tracking

- › Log It All

- › Ratings

- › Usage

##### Continuous Care

- › Coach

- › Remote Adjust

- › FLEX:UPGRADE

#### Personalization

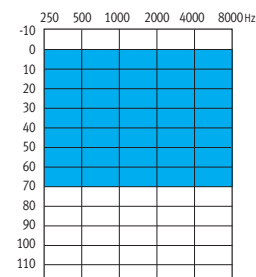
- › Equalizer

- › Clarity and comfort buttons

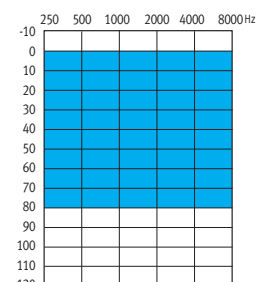
- › Optional app programs

Not all technology levels are available in all markets.

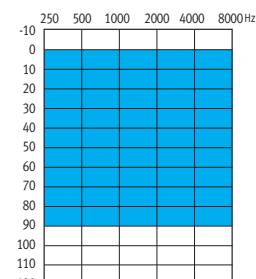
### Fitting guides



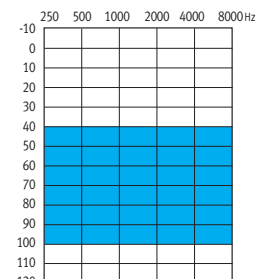
Moderate



Power

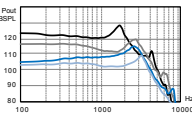


Super power

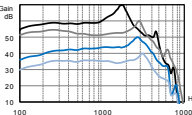


Ultra power

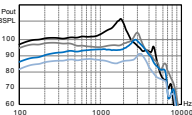
ANSI 3.22 2014/IEC 60118-0: 2015 2cc coupler technical data



OSPL90				
Maximum (dB SPL)	109	115	119	127
HFA - OSPL90 (dB SPL)	103	111	114	120



Full on gain (input 50 dB SPL)				
Maximum (dB)	40	50	60	70
HFA - FOG (dB)	35	46	54	62



Reference test setting (RTS)				
Frequency range (Hz)	<100 - 7000	<100 - 6700	<100 - 7000	<100 - 5200
Reference test gain (dB)	26	34	37	43
Current drain at RTS (mA)	1.7	1.8	1.7	1.7
Equivalent input noise at RTS (dB SPL)	19	19	19	19
Total harmonic distortion at 500 Hz/800 Hz/1600 Hz/3200 Hz (%)	1.0/1.5/1.0/1.0	1.0/1.0/1.0/1.0	1.0/1.0/1.0/1.0	1.0/1.0/1.0/1.0

Legend

Test conditions

- Ultra Power
- Super Power
- Power
- Moderate Power

Battery size: 312; Source voltage: 1.3 V; Vent: closed at canal end.  
Unless otherwise specified, all data obtained are measured with 5 mm tubing.  
The hearing instrument is set to Unitron TrueFit test settings. LLE is applied at an approximate level of 35 dB SPL.  
We reserve the right to change specification data without notice as improvements are introduced.

WARNING: Changes or modifications to the hearing aid that are not explicitly approved by the manufacturer are not permitted.  
Such changes may damage the ear or the hearing aid.