

Recommended systems

System component	Recommendation
Processor	Pentium i5, 3 GHz or faster
RAM	8 GB or more
Hard disk space	4 GB or more
Operating systems supported	<ul style="list-style-type: none">› Windows 8.1, 32 bit/64 bit, latest SP› Windows 10, 32 bit/64 bit, latest SP› Windows 11
Display resolution	1280 x 1024 pixels
Patient secondary display resolution	1366 x 768 pixels
Graphic card	16 Million (24 bit) screen colors or more
Drive	DVD-ROM
Serial COM port	One for HI-PRO if used via serial COM port
USB ports	One for each purpose: <ul style="list-style-type: none">› Bluetooth adaptor› Accessory programming› HI-PRO USB / HI-PRO 2 / iCube II / Noahlink Wireless

System component	Recommendation
Programming interfaces	<ul style="list-style-type: none">› iCube II› NOAHlink / Noahlink Wireless› HI-PRO / HI-PRO USB / HI-PRO 2
NOAHlink driver	NOAHlink properties and NOAHlink kernel: latest version available
Internet connection	Highly recommended
Sound card	Stereo
Playback system	20 Hz – 14 kHz
Noah version	Latest version (Noah 4.4 or higher) Please check the Noah limitations for Windows operating systems on http://www.himsa.com

unitron TrueFit™ software

Successful fittings. Simplified.

Unitron TrueFit v5.3
Installation guide

A Sonova brand

Installing Unitron TrueFit software

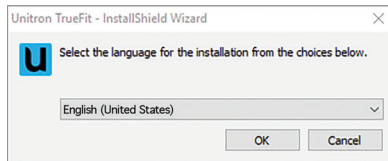
1. Insert the Unitron TrueFit DVD into your DVD-ROM drive. The installation program should be launched automatically by your operating system. If it is not, either:

Go to: Windows Start, choose Run... enter the file information. (i.e. d:\setup.exe, where d: represents the letter of your DVD-ROM drive) and click on OK.

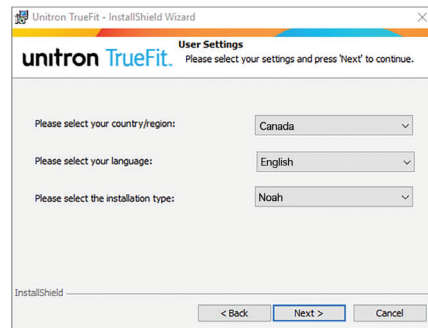
OR



Using Windows Explorer (My Computer), locate the file setup.exe on your DVD-ROM drive and double-click the file name.

2. Select the preferred installation language: English, French, German or Dutch (for the installation procedure only).



3. When the Unitron TrueFit installation window appears, follow the instructions on the screen, such as selecting the preferred installation type: Noah or Standalone.



-  Instructions are available at www.unitron.com/instr in Adobe® Acrobat® PDF format. To view them, you must have Adobe Acrobat Reader installed. Visit Adobe.com to download.
-  To obtain a free paper copy of the instructions, please contact Unitron using the phone numbers or address in this guide. A copy will be sent within 7 days.

Need assistance?

Australia - 1800 212 313
Austria - +43 732 771616-210
Belgium - +31 88 600 88 10
Brazil - +55 11 3748 0960
Canada - 1 800 265 8255
China - +86 21 61205533
Denmark - +45 64 41 78 87
EU Representative - +49 711 658538 0
France - 04 26 23 22 00
Germany - +49 711 658538 0
India - +91 22 2650 3601
Netherlands - +31 88 600 88 10
New Zealand - 0800 864 8766
Norway - +47 960 98 600
Russia - +7 495 788 02 04
South Africa - (011) 467 7662/52
South Korea - +82 2 859 4903
Spain - 0034 965 674 240
Sweden - +46 (0) 8 546 20 960
Switzerland - 0800 928 800
U.K. - +44 (0) 1925 247810
U.S. - 1 800 888 8882

For countries not listed - +1 519 895 0100



Sonova AG
Laubisrütistrasse 28
CH-8712 Stäfa, Switzerland



Importer for European Union:
Sonova Deutschland GmbH
Max-Eyth-Str. 20
70736 Fellbach-Oeffingen, Germany



sonova
HEAR THE WORLD