

# First Fit counselling guide

Our First Fit workflow enables you to fit your clients in as few as four clicks while facilitating easier adaptation for new hearing instrument wearers.

## Why use First Fit?

- ✓ **Efficient workflow:** Fit your clients in as few as four clicks, opening up opportunities to spend more time on client interaction
- ✓ **Client adaptation:** Facilitate easier adaptation for new hearing instrument wearers, helping them transition smoothly to amplification
- ✓ **Flexibility:** Adjust the Automatic Adaptation Manager to suit both new and experienced wearers

## Both new and existing wearers benefit from First Fit

1

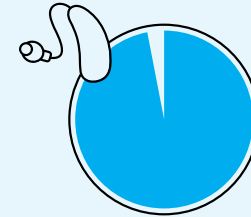
### New wearers

First Fit provides a comfortable starting point, with settings based on age, audiogram and experience. Then the Automatic Adaptation Manager takes over to quickly transition to their full fitting target for optimum long-term performance.

2

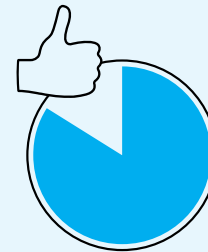
### Experienced wearers

For wearers who are already accustomed to amplification, the Automatic Adaptation Manager begins their hearing journey at their full fitting target. However, you can change both the starting and end points to suit individual client preferences.



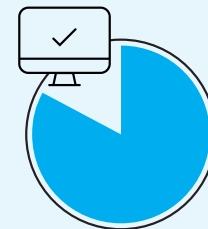
97%

of Unitron customers agree our hearing instruments are easy to fit.<sup>1</sup>



84%

of customers agree that Unitron TrueFit™ fitting software facilitates quick and easy adaptation to amplification for new wearers.<sup>2</sup>



83%

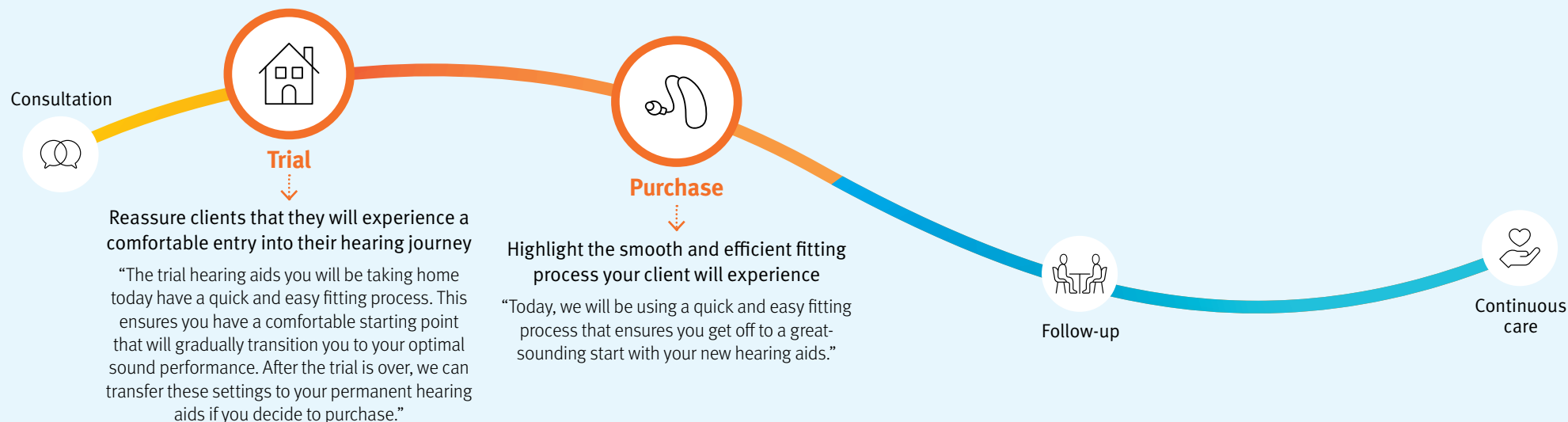
of customers confirm that Unitron TrueFit fitting software provides the fitting and follow up tools they need.<sup>2</sup>

<sup>1</sup>Sonova proprietary research. 2023. Project ID4661. Please contact [marketinsight@unitron.com](mailto:marketinsight@unitron.com) if you are interested in further information.

<sup>2</sup>Sonova proprietary research. 2023. Project ID4688. Please contact [marketinsight@unitron.com](mailto:marketinsight@unitron.com) if you are interested in further information.

## Discussing First Fit with your clients

Whether you're fitting a client for a real-world assessment with FLEX:TRIAL™, or with their newly purchased hearing instruments, First Fit can help you make a great first impression. Here's when and how to discuss the benefits of First Fit along the hearing journey:



## Responding to questions from clients

"What happens if I need further adjustments?"



"This is only the starting point. We can always make additional fine-tuning adjustments to ensure you're getting the best possible experience."



"What happens if these settings don't work for me?"

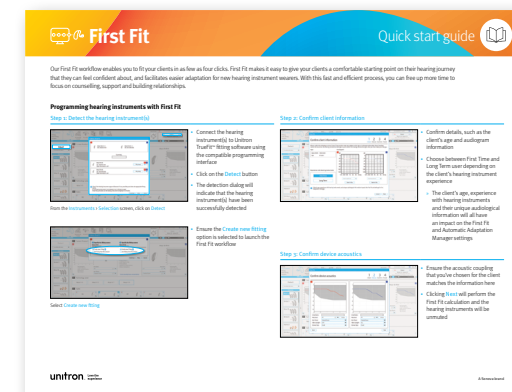


"If the initial settings aren't meeting your listening needs, we can make further adjustments to better suit your needs. We can try different settings until we find what works best for you. There's no obligation to stick with the initial configuration."



## Supporting resources

### First Fit quick start guide



1800 212 313  
unitron.com/au

Unitron makes life vibrant with amazing hearing solutions designed to make the experience easy. Because everyone deserves to **Love the experience.**™

© 2024 Sonova AG, or its affiliates.  
028-6846-48/V1.00/2024-08/jb



Sonova AG,  
Laubisrütistrasse  
28, CH-8712 Stäfa,  
Switzerland



Sonova Deutschland GmbH  
Max-Eyth-Str. 20  
70736 Fellbach-Oeffingen,  
Germany

