

# Smile



Five steps to a  
totally personalised  
hearing solution

**Smile product selection guide 1.0**



**unitron** Love the  
experience

A Sonova brand

# Five steps to the hearing solution that's right for you

---

Step one

**Where do you experience hearing challenges?**

---

Step two

**Explore the technology levels**

---

Step three

**Pick a style that suits you**

---

Step four

**Colour your choice**

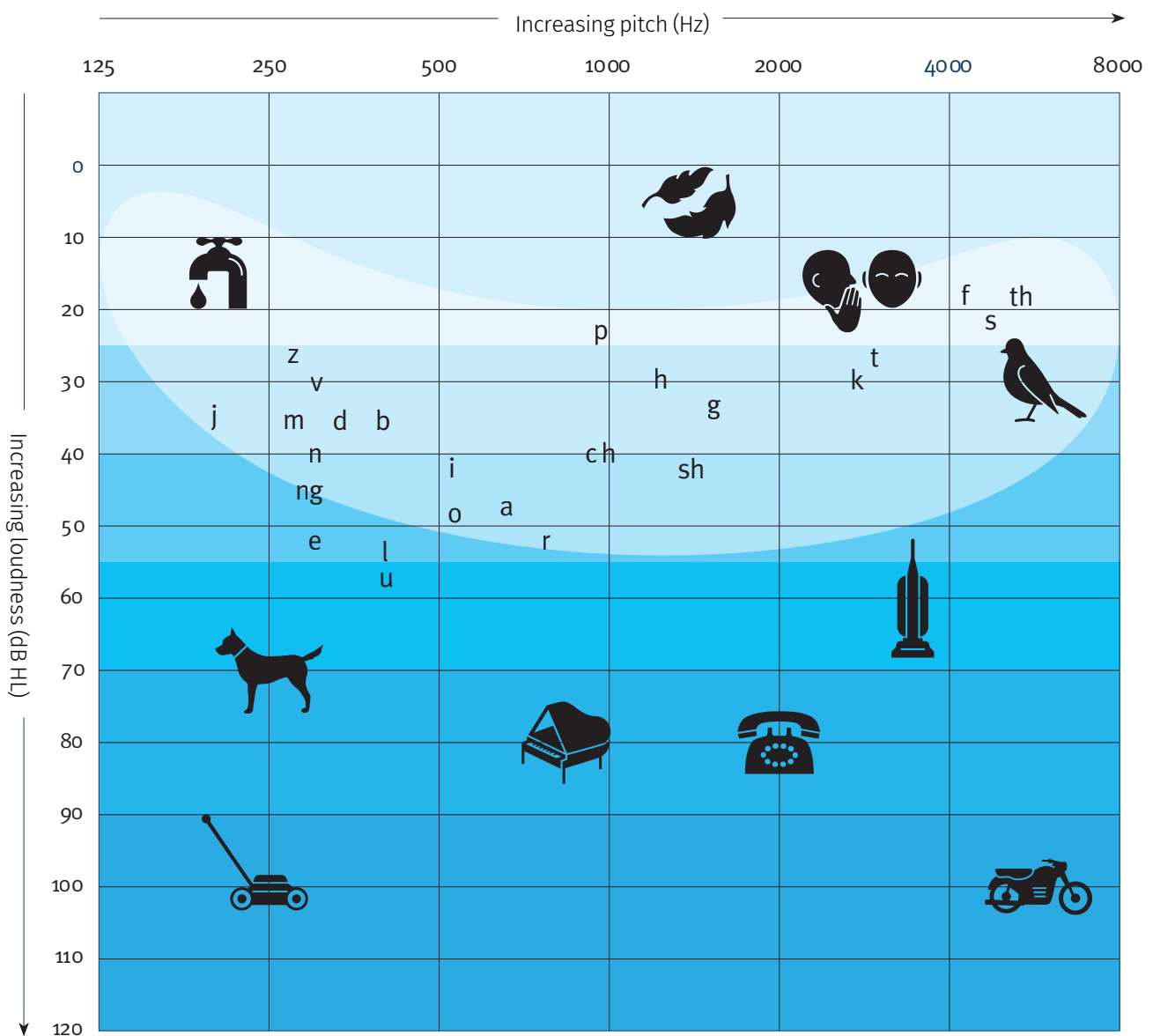
---

Step five

**Connect to convenience**

Step one

# Where do you experience hearing challenges?


























## Step two

# Explore the technology levels

Now we'll select the technology level that best matches your listening lifestyle.

	What's included	What you're missing
<b>Level 9</b> ★★★★★	Premium performance in 8 environments and our most sophisticated features that automatically let you focus on speech and know where it's coming from in crowds and loud background noise (where you spend ___% of your time). Enjoy the ability to hear in quiet as well as delightful music automatically. Plus engage in conversations in the car with a special program that pinpoints and amplifies speech from any direction no matter where you are sitting.	Nothing. You've got everything available to suit your unique lifestyle.
<b>Level 7</b> ★★★★	Advanced performance in 6 environments with the ability to help you focus on speech coming from the front and sides in challenging situations, and hear in quiet situations, plus an automatic music program and a manual car program that can be pre-set to focus on speech from one location.	The most sophisticated features to focus on speech from different directions in noisy conversations in loud noise and the car.
<b>Level 5</b> ★★★	Standard performance in 4 environments that includes features to help you in multiple quiet and noisy environments.	Automatic optimisation for conversation in small groups and automatic engagement of a music program.
<b>Level 3</b> ★★	The essentials in 2 environments. Limited ability to adjust automatically to accommodate more challenging listening situations. The flexibility to customise your experience with the fully featured Remote Plus app and control your streamed audio, calls and virtual assistants with tap control.	Automatic adjustment for comfort in quiet and noisy situations without speech.

# Improve quiet and challenging conversations with our latest advanced technology.

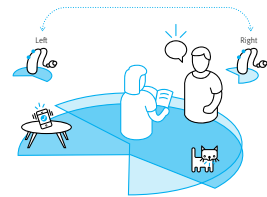
Automatic program	Manual programs
<p>8 environments</p> <div>  <p>Conversation in Quiet</p>  <p>Conversation in Noise</p>  <p>Quiet</p>  <p>Noise</p>  <p>Conversation in a Small Group</p>  <p>Music</p>  <p>Conversation in a Crowd</p>  <p>Conversation in Loud Noise</p> </div>	<div>  <p>Conversation in Loud Noise</p>  <p>360 Conversation in Car</p> </div> <p>Various manual programs can be set</p>
<p>6 environments</p> <div>  <p>Conversation in Quiet</p>  <p>Conversation in Noise</p>  <p>Quiet</p>  <p>Noise</p>  <p>Conversation in a Small Group</p>  <p>Music</p> </div>	<div>  <p>Conversation in Loud Noise</p> <p>Car with Speech</p> </div> <p>Various manual programs can be set</p>
<p>4 environments</p> <div>  <p>Conversation in Quiet</p>  <p>Conversation in Noise</p>  <p>Quiet</p>  <p>Noise</p> </div>	<p>Various manual programs can be set</p>
<p>2 environments</p> <div>  <p>Conversation in Quiet</p>  <p>Conversation in Noise</p> </div>	<p>Various manual programs can be set</p>

Sound performance  
by technology level

Low complexity

Level 9

Premium  
★★★★★

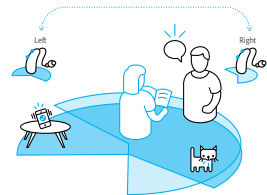


Pinna Effect 2

Binaural microphone mode that is designed to compensate for cues typically lost with hearing aids, which are needed for localisation.

Level 7

Advanced  
★★★★

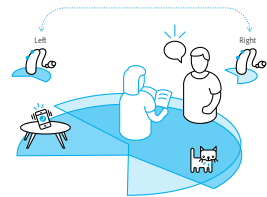


Pinna Effect 2

Binaural microphone mode that is designed to compensate for cues typically lost with hearing aids, which are needed for localisation.

Level 5

Standard  
★★★



Pinna Effect 2

Binaural microphone mode that is designed to compensate for cues typically lost with hearing aids, which are needed for localisation.

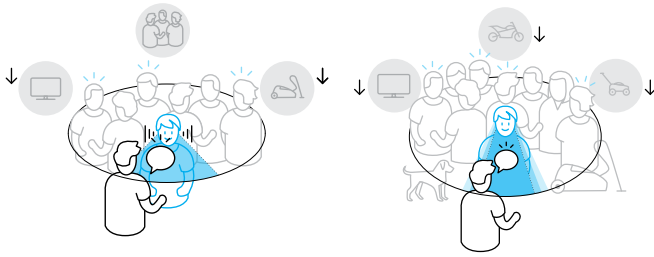
Level 3

Essential  
★★

Pinna Effect

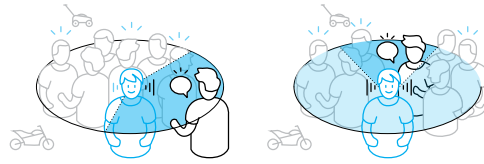
Minimises the impact of acoustic cues typically lost with hearing aids.

## High complexity



### Speech from front

AutoFocus 360 identifies and focuses on speech from the front to provide a greater increase of speech than other technology levels. Dynamic Noise Reduction is active and adjustable to further reduce surrounding noise. For face-to-face conversations, in loud noise, and when the wearer is stationary, HyperFocus engages within the Conversation in Loud Noise environment.



### Speech from side

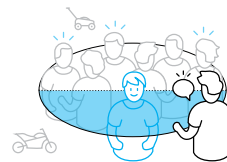
### Speech from back

AutoFocus 360 can identify and focus on speech from any direction while reducing interfering noise.



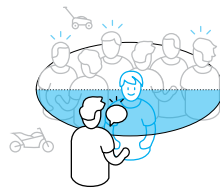
### Speech from front

AutoFocus identifies, focuses on and increases speech from the front. Dynamic Noise Reduction is active and adjustable to further reduce surrounding noise.



### Speech from side and back

AutoFocus applies a wide front beam to capture speech partially from the sides.



### All high complexity situations

Applies a wide front beam capturing the speech from the front.



### All high complexity situations

Applies a wide front beam capturing speech from the front.

## Step three

# Pick a style that suits you

### Products available on the **Smile** platform

Smile hearing aids are comfortable, stylish and discreet. They offer universal connectivity keeping you in the moment, with hands-free calls and smooth media streaming across all your Bluetooth®-enabled devices.

#### Moxi™ (Receiver-in-canal)



**Moxi S-R**

- Rechargeable

☐ Receiver-in-canal (RIC)



**Charger and Charger GO**

Charging cases for Moxi S-R

### Products available on the **Vivante™** platform\*

#### Moxi (Receiver-in-canal)



**Moxi™ V-312**

- Standard 312 battery

☐ Receiver-in-canal (RIC)



**Moxi V-R**

- Rechargeable

☐ Receiver-in-canal (RIC)



**Moxi V-RT**

- Rechargeable  
- Telecoil

☐ Receiver-in-canal (RIC)



**Moxi V-RS**

- Rechargeable

☐ Receiver-in-canal (RIC)

Hearing aids shown at actual size. Charging cases not shown at actual size.



## Stride (Behind-the-ear)



### Stride™ M

- Standard battery
- Telecoil

☐ Behind-the-ear (BTE)



### Stride V-PR

- Rechargeable

☐ Behind-the-ear (BTE)



### Stride V-SP

- Super Power
- Standard 13 battery
- Telecoil

☐ Behind-the-ear (BTE)



### Stride V-UP

- Ultra Power
- Standard 675 battery
- Telecoil

☐ Behind-the-ear (BTE)

## Chargers for the **Vivante** platform

Charging case for  
Moxi V-R and  
Moxi V-RT  
rechargeable  
hearing aids



Charging case for  
Moxi V-RS  
rechargeable  
hearing aids



Charging cases for  
Stride rechargeable  
hearing aids



## Products on the **Blu** platform

### Insera (In-the-ear)



### Insera™ B-312

- Wireless
- Standard 312 battery

☐ In-the-ear (ITE)



### Insera B-312 NW O

- Non-wireless
- Omni
- Standard 312 battery
- Telecoil

☐ In-the-ear (ITE)



### Insera B-10 NW O

- Non-wireless
- Omni
- Standard 10 battery
- Telecoil

☐ In-the-ear (ITE)

Other styles that could suit your hearing needs are available on the Blu platform\*

Hearing aids shown at actual size. Charging cases not shown at actual size.

\* Hearing aids on the Blu and Vivante platforms differ from the Smile platform. Speak with your hearing care professional for more information.

Step four

# Colour your choice



**Sand  
(R8)**



**Amber  
(P2)\***



**Espresso  
(P4)\*^**



**Platinum  
(P6)**



**Pewter  
(P7)\***



**Charcoal  
(P8)^**



**Beige  
(26)**



**Tan  
(14)**



**Cocoa  
(22)**



**Brown  
(28)**



**Black  
(06)\*\***

Colours shown on the Moxi S-R style are also available on all other Moxi products, with the exception of Moxi V-RS  
Moxi S-R shown at actual size.

\*Colours not available on Moxi V-RS.

\*\*Available for Inera B-312 and Inera B-10 IIC styles only.

^ Not available with tech level 1

## Step five

# Connect to convenience



**TV Connector**

Stream your favourite media wirelessly in stereo sound with the TV Connector.



**PartnerMic**

PartnerMic is an easy-to-use lapel microphone ideal for one-on-one conversations.



**Remote Control**

Discreetly adjust volume and switch programs with the Remote Control.

### **Remote Plus app**

The Remote Plus app puts easy personalisation at your fingertips.



Scan to download the Remote Plus app.



App Store



Google Play

**Need more help in challenging listening situations like meetings or conversations in noise or over distance?**

Let's discuss if a Roger™ device could be a good fit for you.

Accessories shown at actual size.

Accessories shown are available with all Smile and Vivante products and wireless products on the Blu platform.

App Store is a service mark of Apple Inc.

Google Play is a trademark of Google Inc.

## What's next?

- ☐ Discuss your needs
- ☐ Try at home
- ☐ Come in for a follow-up assessment
- ☐ Personalise your solution
- ☐ Come in for your final fitting on:

Recommendation:			
Technology level:	Style:	Warranty:	Cost:
Accessories:			

Notes:



Unitron makes life vibrant with amazing hearing solutions designed to make the experience easy. Because everyone deserves to **Love the experience**.™

© 2025 Sonova AG, or its affiliates.

028-6869-48/V1.01/2025-05/jb

**unitron.com/au**  
**1800 212 313**



**sonova**  
HEAR THE WORLD