

# Unitron device programming guide (Effective February 2026)

## TrueFit™ Software

Version 5.9 supports the following product families:

Smile platform: Moxi, Insera

Vivante platform: Moxi, Stride

Blu platform: Moxi, Stride, Insera

Discover Next platform: Moxi, Stride, Insera

Discover platform: Moxi, Stride

Tempus platform: Moxi, Stride, Insera, Max

North platform: Moxi, Stride

Era Platform: Quantum, Quantum2, Moxi, Moxi2, Ma

Platform/Product	Programming interface	Cable option	Notes
Smile			
Moxi S-R	Noahlink Wireless	Wireless cable free programming No wired cables compatible	<b>Battery:</b> There is no battery door, units are Li-Ion rechargeable.  <b>On/Off:</b> To switch the units on, press and hold the lower part of the button on each of the hearing instruments for 3 seconds until the indicator light changes temporarily to solid green. This will also place the units in pairing mode, which lasts for 3 minutes.
Insera S-R	Noahlink Wireless	Wireless cable free programming No wired cables compatible	<b>Battery:</b> There is no battery door, units are Li-Ion rechargeable.  <b>On/Off:</b> To switch the units on, press and hold the push button on each of the hearing instruments for 3 seconds until the indicator light changes temporarily to solid green. This will also place the units in pairing mode, which lasts for 3 minutes.
Insera S-10 NW O	NOAHlink/HI-PRO	HI-PRO cables 2m: 10A (white) or NOAHlink Cables 0.5m: 10A (white)  Note: using the black 10A programming cable is not recommended as it may damage the battery contacts	<b>Battery:</b> Must be removed when programming using a cable. Battery Door: Must be removed to insert cable.

Platform/Product	Programming interface	Cable option	Notes
Vivante			
Moxi V-R	Noahlink Wireless	Wireless cable free programming No wired cables compatible	<b>Battery:</b> There is no battery door, units are Li-Ion rechargeable.  <b>On/Off:</b> To switch the units on, press and hold the lower part of the button on each of the hearing instruments for 3 seconds until the indicator light changes temporarily to solid green. This will also place the units in pairing mode, which lasts for 3 minutes.
Moxi V-RT	Noahlink Wireless	Wireless cable free programming No wired cables compatible	
Moxi V-RS	Noahlink Wireless	Wireless cable free programming No wired cables compatible	
Moxi V-312	Noahlink Wireless	Wireless cable free programming No wired cables compatible	<b>Battery:</b> Insert battery into battery door when programming using Noahlink Wireless.  <b>On/Off Switch:</b> The hearing aid will power on when the battery door is closed with the battery in place when using Noahlink Wireless. This will also place the units in pairing mode, which lasts for 3 minutes.
Stride V-M	Noahlink Wireless	Wireless cable free programming No wired cables compatible	
Stride V-SP	Noahlink Wireless	Wireless cable free programming No wired cables compatible	
Stride V-UP	Noahlink Wireless	Wireless cable free programming No wired cables compatible	
Stride V-PR	Noahlink Wireless	Wireless cable free programming No wired cables compatible	<b>Battery:</b> There is no battery door, units are Li-Ion rechargeable.  <b>On/Off:</b> To switch the units on, press and hold the lower part of the button on each of the hearing instruments for 3 seconds until the indicator light changes temporarily to solid green. This will also place the units in pairing mode, which lasts for 3 minutes.

Platform/Product	Programming interface	Cable option	Notes
<b>Blu</b>			
Moxi B-R	Noahlink Wireless	Wireless cable free programming No wired cables compatible	<b>Battery:</b> There is no battery door, units are Li-Ion rechargeable.  <b>On/Off:</b> To switch the units on, press and hold the lower part of the button on each of the hearing instruments for 3 seconds until the indicator light changes temporarily to solid green. This will also place the units in pairing mode, which lasts for 3 minutes.
Moxi B-RT	Noahlink Wireless	Wireless cable free programming No wired cables compatible	
Stride B-PR	Noahlink Wireless	Wireless cable free programming No wired cables compatible	
Moxi B-312	Noahlink Wireless	Wireless cable free programming No wired cables compatible	<b>Battery:</b> Insert battery into battery door when programming using Noahlink Wireless.  <b>On/Off Switch:</b> The hearing aid will power on when the battery door is closed with the battery in place when using Noahlink Wireless. This will also place the units in pairing mode, which lasts for 3 minutes.
Stride B-UP	Noahlink Wireless	Wireless cable free programming No wired cables compatible	
Insera B-312	Noahlink Wireless	Wireless cable free programming No wired cables compatible	
Insera B-312 NW O	NOAHlink/HI-PRO	HI-PRO cables 2m: Plug-in cable 312 0.5M/L or NOAHlink Cables 0.5m: Plug-in cable 312 0.5M/L	<b>Battery:</b> Must be removed when programming using a cable.  <b>Battery Door:</b> Must be removed to insert cable.
Insera B-10 NW O	NOAHlink/HI-PRO	HI-PRO cables 2m: 10A (white) or NOAHlink Cables 0.5m: 10A (white)  Note: using the black 10A programming cable is not recommended as it may damage the battery contacts	

Platform/Product	Programming interface	Cable option	Notes
Discover Next			
Moxi Move R	Noahlink Wireless	Wireless cable free programming No wired cables compatible	<b>Battery:</b> There is no battery door, units are Li-Ion rechargeable.  <b>On/Off:</b> To switch the units on, press and hold the lower part of the button on each of the hearing instruments for 3 seconds until the indicator light changes temporarily to solid green. This will also place the units in pairing mode, which lasts for 3 minutes.
Moxi Jump R T	Noahlink Wireless	Wireless cable free programming No wired cables compatible	
Stride P R	Noahlink Wireless	Wireless cable free programming No wired cables compatible	
Moxi Fit	Noahlink Wireless	Wireless cable free programming No wired cables compatible	<b>Battery:</b> Insert battery into battery door when programming using Noahlink Wireless.  <b>On/Off Switch:</b> The hearing aid will power on when the battery door is closed with the battery in place when using Noahlink Wireless. This will also place the units in pairing mode, which lasts for 3 minutes.
Stride M	Noahlink Wireless	Wireless cable free programming No wired cables compatible	
Insera 312 W Dir	Noahlink Wireless	Wireless cable free programming No wired cables compatible	<b>Battery:</b> Insert battery into battery door when programming using Noahlink Wireless.  <b>On/Off Switch:</b> The hearing aid will power on when the battery door is closed with the battery in place when using Noahlink Wireless. This will also place the units in pairing mode, which lasts for 3 minutes.
Insera 312 Omni	NOAHlink/HI-PRO	HI-PRO cables 2m: Plug-in cable 312 0.5M/L or NOAHlink Cables 0.5m: Plug-in cable 312 0.5M/L	<b>Battery:</b> Must be removed when programming using a cable.  <b>Battery door:</b> Must be removed to insert cable. Must be closed with battery in place when programming.  <b>On/Off Switch:</b> The hearing aid will power on when the programming cable is connected to the hearing aid.
Insera 10A Omni	NOAHlink/HI-PRO	HI-PRO cables 2m: 10A (white) or NOAHlink Cables 0.5m: 10A (white)  Note: using the black 10A programming cable is not recommended as it may damage the battery contacts	

Platform/Product	Programming interface	Cable option	Notes
Discover			
Moxi Jump R	Noahlink Wireless	Wireless cable free programming No wired cables compatible	<b>Battery:</b> There is no battery door, units are Li-Ion rechargeable.  <b>On/Off:</b> To switch the units on, press and hold the lower part of the button on each of the hearing instruments for 3 seconds until the indicator light changes temporarily to solid green. This will also place the units in pairing mode, which lasts for 3 minutes.
Moxi Jump R T	Noahlink Wireless	Wireless cable free programming No wired cables compatible	
Stride P R	Noahlink Wireless	Wireless cable free programming No wired cables compatible	
Moxi Fit	Noahlink Wireless	Wireless cable free programming No wired cables compatible	<b>Battery:</b> Insert battery into battery door when programming using Noahlink Wireless.  <b>On/Off Switch:</b> The hearing aid will power on when the battery door is closed with the battery in place when using Noahlink Wireless. This will also place the units in pairing mode, which lasts for 3 minutes.

Platform/Product	Programming interface	Cable option	Notes
Tempus			
Moxi All	Noahlink Wireless	Wireless cable free programming No wired cables compatible	<p><b>Battery:</b> Insert battery into battery door when programming using Noahlink Wireless.</p> <p><b>On/Off Switch:</b> The hearing aid will power on when the battery door is closed with the battery in place when using Noahlink Wireless.</p>
Moxi Now	iCube II	Wireless cable free programming No wired cables compatible	<p><b>Battery:</b> Insert battery into battery door when programming using iCube II.</p> <p><b>On/Off Switch:</b> The hearing aid will power on when the battery door is closed with the battery in place when using iCube II.</p>
Moxi Fit	iCube II	HI-PRO Cables 2m: DIN/CS44 Plug Cable Style 4 or NOAHlink Cables 0.5 m	<p><b>Battery:</b> Must be removed when programming using a cable. Insert battery into battery door when programming using iCube II.</p> <p><b>Battery door:</b> Must be opened to insert cable. Must be closed with battery in place when using iCube II.</p> <p><b>On/Off Switch:</b> There is no physical on/off switch on the hearing aid. The hearing aid will power on when the programming cable is connected to the hearing aid or when the battery door is closed with battery in place when using iCube II.</p>
Moxi Kiss	iCube II	HI-PRO Cables 2m: DIN/CS44 Plug Cable Style 4 or NOAHlink Cables 0.5 m	
Moxi Dura	iCube II	HI-PRO Cables 2m: DIN/CS44 Plug Cable Style 4 or NOAHlink Cables 0.5 m	
Stride M	iCube II	HI-PRO Cables 2m: DIN/CS44 Plug Cable Style 4 or NOAHlink Cables 0.5m	
Stride M R	iCube II	HI-PRO Cables 2m: DIN/CS44 Plug Cable Style 4 or NOAHlink Cables 0.5m	
Stride P	iCube II	HI-PRO Cables 2m: DIN/CS44 Plug Cable Style 4 or NOAHlink Cables 0.5m	
Stride P Dura	iCube II	HI-PRO Cables 2m: DIN/CS44 Plug Cable Style 4 or NOAHlink Cables 0.5m	

Platform/Product	Programming interface	Cable option	Notes
Tempus			
Max SP	iCube II	HI-PRO Cables 2m: DIN/CS44 Plug Cable Style 4 or NOAHlink Cables 0.5m	<p><b>Battery:</b> Must be removed when programming using a cable. Insert battery into battery door when programming using iCube II.</p> <p><b>Battery door:</b> Must be removed to insert cable. Must be closed with battery in place when using iCube II.</p> <p><b>On/Off Switch:</b> There is no physical on/off switch on the hearing aid. The hearing aid will power on when the programming cable is connected to the hearing aid or when the battery door is closed with battery in place when using iCube II.</p>
Max UP	iCube II	HI-PRO Cables 2m: DIN/CS44 Plug Cable Style 4 or NOAHlink Cables 0.5m	
Insera 13 W Dir	iCube II	HI-PRO cables 2m: Plug-in cable 13 0.5M/L or NOAHlink Cables 0.5m: Plug-in cable 13 0.5M/L	
Insera 312 W Dir	iCube II	HI-PRO cables 2m: Plug-in cable 312 0.5M/L or NOAHlink Cables 0.5m: Plug-in cable 312 0.5M/L	
Insera 10A W Dir	iCube II	HI-PRO cables 2m: 10A (white) or NOAHlink Cables 0.5m: 10A (white)  Note: using the black 10A programming cable is not recommended as it may damage the battery contacts	
Insera 10A W Omni	iCube II	HI-PRO cables 2m: 10A (white) or NOAHlink Cables 0.5m: 10A (white)  Note: using the black 10A programming cable is not recommended as it may damage the battery contacts	
Insera 10A Omni	NOAHlink/HI-PRO	HI-PRO cables 2m: 10A (white) or NOAHlink Cables 0.5m: 10A (white)  Note: using the black 10A programming cable is not recommended as it may damage the battery contacts	

Platform/Product	Programming interface	Cable option	Notes
North			
Moxi Now	iCube II	Wireless cable free programming No wired cables compatible	<p><b>Battery:</b> Insert battery into battery door when programming using iCube II.</p> <p><b>On/Off Switch:</b> The hearing aid will power on when the battery door is closed with the battery in place when using iCube II.</p>
Moxi Kiss	iCube II	HI-PRO Cables 2m: DIN/CS44 Plug Cable Style 4 or NOAHlink Cables 0.5 m	<p><b>Battery:</b> Must be removed when programming using a cable. Insert battery into battery door when programming using iCube II.</p> <p><b>Battery door:</b> Must be opened to insert cable. Must be closed with battery in place when using iCube II.</p> <p><b>On/Off Switch:</b> There is no physical on/off switch on the hearing aid. The hearing aid will power on when the programming cable is connected to the hearing aid or when the battery door is closed with battery in place when using iCube II.</p>
Moxi Dura	iCube II	HI-PRO Cables 2m: DIN/CS44 Plug Cable Style 4 or NOAHlink Cables 0.5 m	
Moxi Fit	iCube II	HI-PRO Cables 2m: DIN/CS44 Plug Cable Style 4 or NOAHlink Cables 0.5 m	
Stride M BTE	iCube II	HI-PRO Cables 2m: DIN/CS44 Plug Cable Style 4 or NOAHlink Cables 0.5 m	
Stride P BTE	iCube II	HI-PRO Cables 2m: DIN/CS44 Plug Cable Style 4 or NOAHlink Cables 0.5 m	
Stride P Dura	iCube II	HI-PRO Cables 2m: DIN/CS44 Plug Cable Style 4 or NOAHlink Cables 0.5 m	



Platform/Product	Programming interface	Cable option	Notes
Stride 13 W Dir	iCube II	HI-PRO cables 2m: Plug-in cable 13 0.5M/L or NOAHlink Cables 0.5m: Plug-in cable 13 0.5M/L	<p><b>Battery:</b> Must be removed when programming using a cable. Insert battery into battery door when programming using iCube II.</p> <p><b>Battery door:</b> Must be removed to insert cable. Must be closed with battery in place when using iCube II.</p> <p><b>On/Off Switch:</b> There is no physical on/off switch on the hearing aid. The hearing aid will power on when the programming cable is connected to the hearing aid or when the battery door is closed with battery in place when using iCube II.</p>
Stride 312 W Dir	iCube II	HI-PRO cables 2m: Plug-in cable 312 0.5M/L or NOAHlink Cables 0.5m: Plug-in cable 312 0.5M/L	
Stride 10A W Dir	iCube II	HI-PRO cables 2m: 10A (white) or NOAHlink Cables 0.5m: 10A (white)  Note: using the black 10A programming cable is not recommended as it may damage the battery contacts	
Stride 10A W Omni	iCube II	HI-PRO cables 2m: 10A (white) or NOAHlink Cables 0.5m: 10A (white)  Note: using the black 10A programming cable is not recommended as it may damage the battery contacts	
Stride 10A IIC	NOAHlink/HI-PRO	HI-PRO cables 2m: Plug-in cable 10A 0.5M/L or NOAHlink Cables 0.5m: Plug-in cable 10A 0.5M/L	
Stride 10A Omni	NOAHlink/HI-PRO	HI-PRO cables 2m: 10A (white) or NOAHlink Cables 0.5m: 10A (white)  Note: using the black 10A programming cable is not recommended as it may damage the battery contacts	

Platform/Product	Programming interface	Cable option	Notes
<b>Era</b>			
Moxi Now	iCube/iCube II	HI-PRO Cables 2m: DIN/CS44 Plug Cable Style 4 or NOAHlink Cables 0.5 m	<b>Battery:</b> Must be removed when programming using a cable. Insert battery into battery door when programming with iCube.  <b>Battery door:</b> Must be opened to insert cable. Must be closed with battery in place when using iCube.  <b>On/Off Switch:</b> There is no physical on/off switch on the hearing aid. The hearing aid will power on when the programming cable is connected to the hearing aid or when the battery door is closed with battery in place when using iCube.
Moxi Kiss	iCube/iCube II	HI-PRO Cables 2m: DIN/CS44 Plug Cable Style 4 or NOAHlink Cables 0.5 m	
Moxi2	iCube/iCube II	HI-PRO Cables 2m: DIN/CS44 Plug Cable Style 4 or NOAHlink Cables 0.5 m	<b>Battery:</b> Must be removed when programming using a cable. Insert battery into battery door when programming with iCube.  <b>Battery door:</b> Must be opened to insert cable. Must be closed with battery in place when using iCube.  <b>On/Off Switch:</b> There is no physical on/off switch on the hearing aid. The hearing aid will power on when the programming cable is connected to the hearing aid or when the battery door is closed with battery in place when using iCube.
Moxi2 Dura	iCube/iCube II	HI-PRO Cables 2m: DIN/CS44 Plug Cable Style 4 or NOAHlink Cables 0.5 m	
Moxi2 Kiss	iCube/iCube II	HI-PRO Cables 2m: DIN/CS44 Plug Cable Style 4 or NOAHlink Cables 0.5 m	
Quantum 13 W Dir	iCube/iCube II	HI-PRO cables 2m: Plug-in cable 13 0.5M/L or NOAHlink Cables 0.5m: Plug-in cable 13 0.5M/L  Insert right or left programming cable for the appropriate shell style and battery size	<b>Battery &amp; battery door:</b> Must be removed when programming using a cable. Insert battery into battery door when programming using iCube.  <b>On/Off Switch:</b> There is no physical on/off switch on the hearing aid. The hearing aid will power on when the programming cable is connected to the hearing aid or when the battery door is closed with battery in place when using iCube.
Quantum 312 W Dir	iCube/iCube II	HI-PRO cables 2m: Plug-in cable 312 0.5M/L or NOAHlink Cables 0.5m: Plug-in cable 312 0.5M/L  Insert right or left programming cable for the appropriate shell style and battery size	
Quantum 312 W Omni	iCube/iCube II	HI-PRO cables 2m: Plug-in cable 312 0.5M/L or NOAHlink Cables 0.5m: Plug-in cable 312 0.5M/L  Insert right or left programming cable for the appropriate shell style and battery size	

Platform/Product	Programming interface	Cable option	Notes
<b>Era</b>			
Quantum 312 Dir	NOAHlink/HI-PRO	HI-PRO cables 2m: 312 (black) or NOAHlink Cables 0.5m: 312 (black)  Insert right or left programming cable for the appropriate side	<b>Battery &amp; battery door:</b> Must be removed when programming using a cable.  <b>On/Off Switch:</b> There is no physical on/off switch on the hearing aid. The hearing aid will power on when the programming cable is connected to the hearing aid.
Quantum 312 Omni	NOAHlink/HI-PRO	HI-PRO cables 2m: 312 (black) or NOAHlink Cables 0.5m: 312 (black)  Insert right or left programming cable for the appropriate side	
Quantum 10A Omni	NOAHlink/HI-PRO	HI-PRO cables 2m: 10A (black) or NOAHlink Cables 0.5m: 10A (black)  Insert right or left programming cable for the appropriate side	
Quantum Micro CIC	NOAHlink/HI-PRO	HI-PRO cables 2m: 10A (white) or NOAHlink Cables 0.5m: 10A (white)  Insert right or left programming cable for the appropriate side  Note: using the black 10A programming cable is not recommended as it may damage the battery contacts	
Quantum BTE High Power	iCube/iCube II	HI-PRO Cables 2m: DIN/CS44 Plug Cable Style 4 or NOAHlink Cables 0.5 m	<b>Battery:</b> Must be removed when programming using a cable. Insert battery into battery door when programming with iCube.  <b>Battery door:</b> Must be opened to insert cable. Must be closed with battery in place when using iCube.  <b>On/Off Switch:</b> There is no physical on/off switch on the hearing aid. The hearing aid will power on when the programming cable is connected to the hearing aid or when the battery door is closed with battery in place when using iCube.
Quantum BTE Standard	iCube/iCube II	HI-PRO Cables 2m: DIN/CS44 Plug Cable Style 4 or NOAHlink Cables 0.5 m	
Quantum BTE Micro	iCube/iCube II	HI-PRO Cables 2m: DIN/CS44 Plug Cable Style 4 or NOAHlink Cables 0.5 m	

Platform/Product	Programming interface	Cable option	Notes
<b>Era</b>			
Quantum2 13 W Dir	iCube/iCube II	HI-PRO cables 2m: Plug-in cable 13 0.5M/L or NOAHlink Cables 0.5m: Plug-in cable 13 0.5M/L  Insert right or left programming cable for the appropriate shell style and battery size	<b>Battery &amp; battery door:</b> Must be removed when programming using a cable. Insert battery into battery door when programming using iCube.  <b>On/Off Switch:</b> There is no physical on/off switch on the hearing aid. The hearing aid will power on when the programming cable is connected to the hearing aid or when the battery door is closed with battery in place when using iCube.
Quantum2 312 W Dir	iCube/iCube II	HI-PRO cables 2m: Plug-in cable 312 0.5M/L or NOAHlink Cables 0.5m: Plug-in cable 312 0.5M/L  Insert right or left programming cable for the appropriate shell style and battery size	
Quantum2 312 Dir	NOAHlink/HI-PRO	HI-PRO cables 2m: 312 (black) or NOAHlink Cables 0.5m: 312 (black) Insert right or left programming cable for the appropriate side	<b>Battery &amp; battery door:</b> Must be removed when programming using a cable.  <b>On/Off Switch:</b> There is no physical on/off switch on the hearing aid. The hearing aid will power on when the programming cable is connected to the hearing aid.
Quantum2 10A Omni	NOAHlink/HI-PRO	HI-PRO cables 2m: 10A (white) or NOAHlink Cables 0.5m: 10A (white)  Insert right or left programming cable for the appropriate side  Note: using the black 10A programming cable is not recommended as it may damage the battery contacts	
Quantum2 Micro CIC	NOAHlink/HI-PRO	HI-PRO cables 2m: 10A (white) or NOAHlink Cables 0.5m: 10A (white)  Insert right or left programming cable for the appropriate side  Note: using the black 10A programming cable is not recommended as it may damage the battery contacts	

Platform/Product	Programming interface	Cable option	Notes
<b>Era</b>			
Quantum2 BTE Standard	iCube/iCube II	HI-PRO Cables 2m: DIN/CS44 Plug Cable Style 4 or NOAHlink Cables 0.5 m	<b>Battery:</b> Must be removed when programming using a cable. Insert battery into battery door when programming with iCube.  <b>Battery door:</b> Must be opened to insert cable. Must be closed with battery in place when using iCube.  <b>On/Off Switch:</b> There is no physical on/off switch on the hearing aid. The hearing aid will power on when the programming cable is connected to the hearing aid or when the battery door is closed with battery in place when using iCube.
Quantum2 BTE High Power	iCube/iCube II	HI-PRO Cables 2m: DIN/CS44 Plug Cable Style 4 or NOAHlink Cables 0.5 m	
Max SP	iCube/iCube II	HI-PRO Cables 2m: DIN/CS44 Plug Cable Style 4 or NOAHlink Cables 0.5 m	<b>Battery:</b> Must be removed when programming using a cable. Insert battery into battery door when programming with iCube.  <b>Battery door:</b> Must be opened to insert cable. Must be closed with battery in place when using iCube.  <b>Programming port:</b> Open the programming port cover near the lever to access the programming port.  <b>On/Off Switch:</b> There is no physical on/off switch on the hearing aid. The hearing aid will power on when the programming cable is connected to the hearing aid or when the battery door is closed with battery in place when using iCube.
Max SPm	iCube/iCube II	HI-PRO Cables 2m: DIN/CS44 Plug Cable Style 4 or NOAHlink Cables 0.5 m	

## Programming information

Prior to detecting the hearing instrument(s), choose your desired programming interface. Note: During programming hearing instrument controls, automatic program, accessories, easy-t, easy-DAI, audio streaming, Bluetooth® connectivity, and automatic microphone options are deactivated.

### Noahlink Wireless

To switch the units on, if the units have no battery door, press and hold the lower part of the button on each of the hearing instruments for 3 seconds until the indicator light changes temporarily to solid green.

For units with a battery door, insert batteries into the hearing instruments and close the battery doors. This will also place the units in pairing mode, which lasts for 3 minutes.

If connecting to hearing instruments that are not saved in the current session, the hearing instruments must be in pairing mode.

If connecting to hearing instruments that are already saved in the current session, the hearing instruments do not have to be in pairing mode.

### iCube / iCube II

Ensure iCube II is powered on and the battery is charged.

Ensure iCube II is positioned within ~ 10 meters of the programming computer.

If using iCube II via USB connection, check the USB cable and ensure it is firmly plugged into the computer and iCube II.

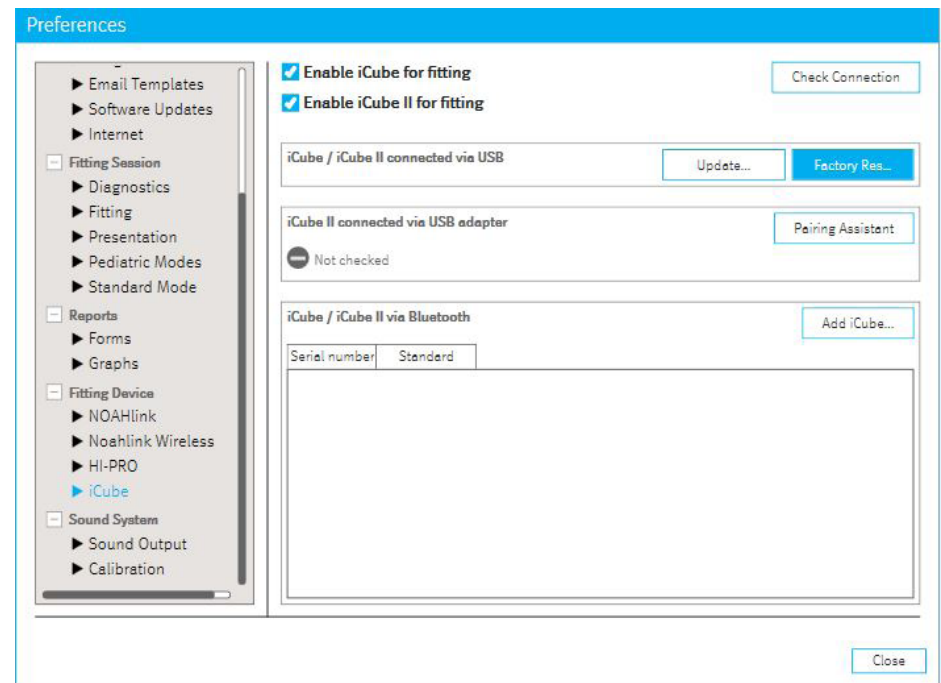
iCube II must be enabled in the software prior to programming wireless instruments.

If using iCube/ iCube II for the first time, you will need to configure the fitting device. From the top menu select [Options](#) > [iCube Configuration](#) and follow the on-screen instructions (see image).

If using iCube/iCube II, insert batteries into the hearing instruments and close the battery door.

Place hearing instruments on your client's ears and place the iCube/iCube II around your client's neck or place the hearing instruments inside the iCube/iCube II neck loop.

Note: The original iCube will not detect hearing instruments on the North or Tempus platforms.



## NOAHlink / HI-PRO

If using NOAHlink or HI-PRO with BTE or RIC hearing instruments, open the battery door and insert the programming cable into the programming port. Connect the other end of the cable to the NOAHlink or HI-PRO.

If using NOAHlink or HI-PRO with ITE hearing instruments, remove the battery door and insert the programming cable. Connect the other end of the cable to the NOAHlink or HI-PRO.

## TrueFit software - testing the programming interface

In the TrueFit software, you can select/test/configure your programming interface device.

By selecting from the top menu **Options > Preferences > Fitting Device**, a dialog box will appear with the following options:

- NOAHlink: enable/disable the NOAHlink, perform a system check, configure properties, or start the pairing wizard.
- Noahlink Wireless: enable/disable the Noahlink Wireless, check connection.
- HI-PRO: enable/disable the HI-PRO, perform a system check or configure.
- iCube: enable/disable the iCube / iCube II, perform a system check via USB or wireless connection, upgrade firmware, or start the pairing wizard.

